



High performance symmetrical horn antenna



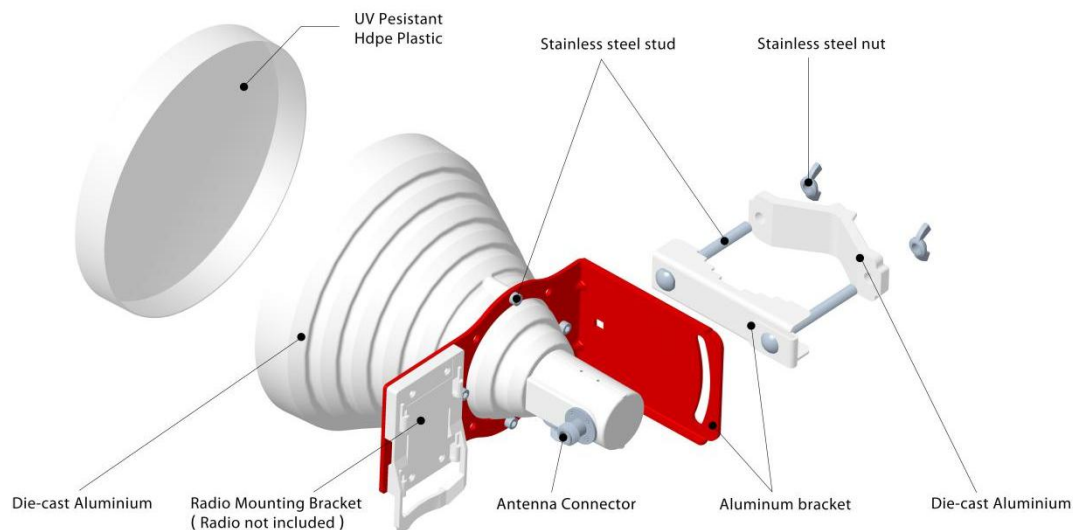
WIS-ANH619

Product Overview

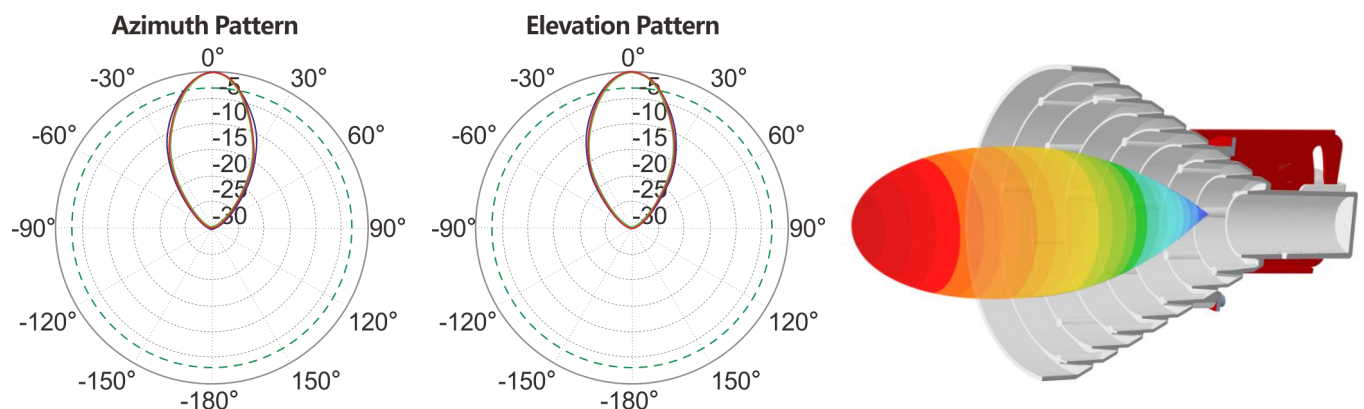
The WIS-ANH619 is a high performance symmetrical horn antenna with a 6 dB beamwidth of 30° and a stable gain of 19 dBi and over an ultra-wide bandwidth of 4.9 GHz to 6.4 GHz.

The horn antenna's symmetrical radiation patterns was optimized using advanced genetic algorithm techniques to have significantly reduced side lobes that rapidly drops below 30 dB outside the main beam and a minimum front-to-back of 43 dB. The highly suppressed side lobes and superior front to back allows for channel (frequency) reuse and can reach high levels of spectral efficiency in the most challenging and noisy environments.

Hardware Overview

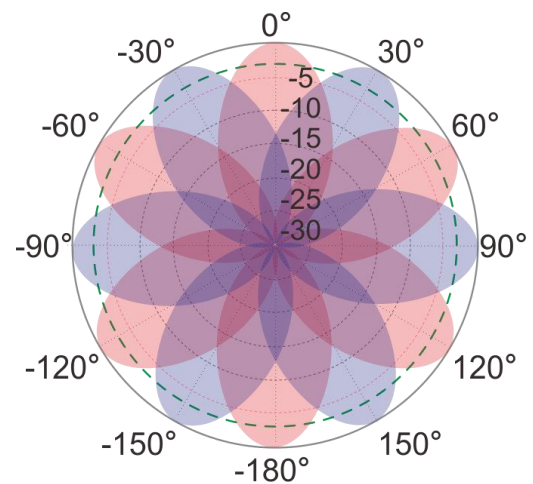
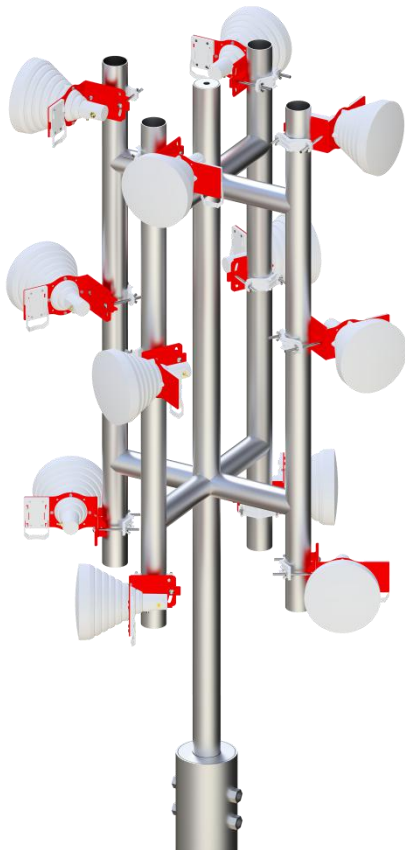


Antenna Patterns

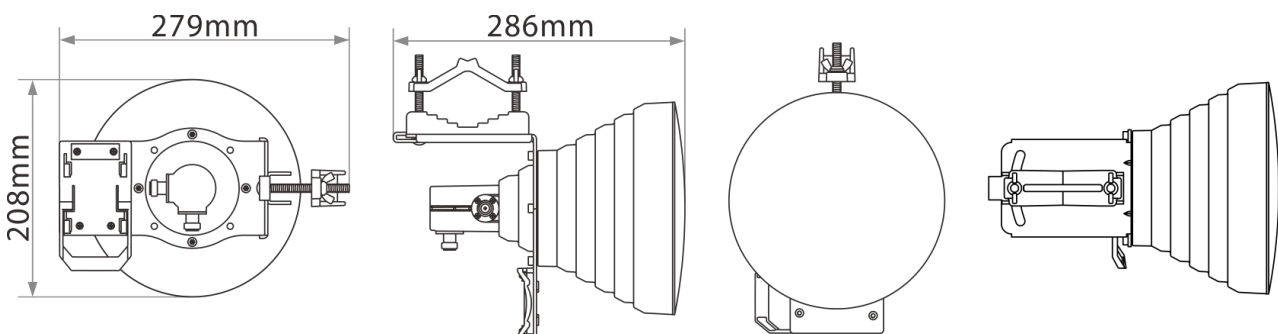


Features and Benefits

delivers excellent performance in dense co-location deployments. You can split poorly performing 90° sector into three 30° sectors with excellent performance using Horn 30 sector antennas and offer higher throughput packages or connect more customers.



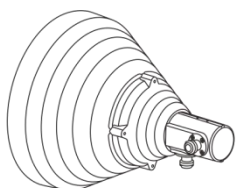
Mechanical Drawing



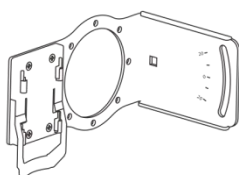
Specifications

Electrical			
Frequency Range	4.9-5.1GHz	5.1-5.9GHz	5.9-6.5GHz
Gain(dBi)	18dBi	19dBi	19.5dBi
VSWR	<2.8	<2.0	<2.0
Polarization	Dual Slant (V/H or $\pm 45^\circ$)		
Isolation	>30dB		
Front to Back Ratio:	>40dB		
Azimuth Beam Width -3 dB	V20 $^\circ$ /H20 $^\circ$		
Elevation Beam Width -3 dB	V20 $^\circ$ /H20 $^\circ$		
Azimuth Beam Width -6 dB	V30 $^\circ$ /H30 $^\circ$		
Elevation Beam Width -6 dB	V30 $^\circ$ /H30 $^\circ$		
Maximum Power Per Port	50W		
Impedance	50Ω		
Lighting protection	DC Ground		
Mechanical			
Connector	2 * RPSMA		
Antenna Size	Φ208*278mm		
Antenna Weight	1kg		
Antenna color	white		
Dish material	aluminum		
Mechanical Tilt	$\pm 25^\circ$		
Diameter of the Pole	Φ30 to φ80 mm		
Operational Temperature	-40°C to +70°C (-32°F to +158°F)		

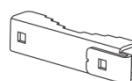
Package Content



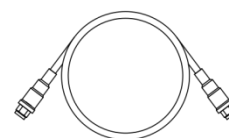
Horn Antenna 1Pcs



L bracket 1Pcs



bracket 1Pcs



Pigtail 2Pcs



Die-cast Aluminium 1Pcs



Stainless steel stud 4Pcs



Stainless steel stud 2Pcs



Stainless steel nut 2Pcs